

THE HILLVIEW 2 bedroom mid terraced villa

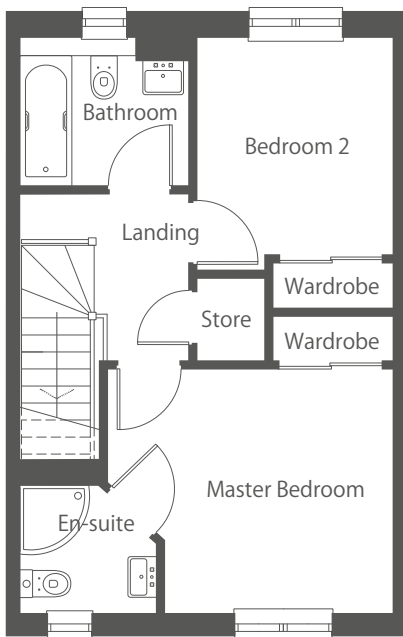
THE RESERVE
AT EDEN



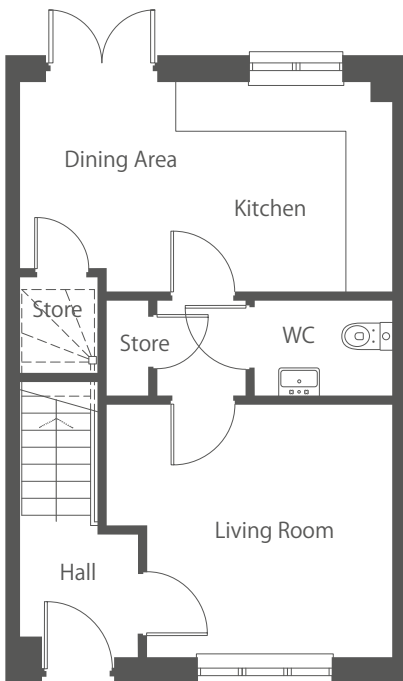
Computer generated image for illustrative purposes only.

Bancon Homes





FIRST FLOOR



GROUND FLOOR

THE HILLVIEW

2 bedroom mid terraced villa

The attractive Hillview has been designed for modern living. On the ground floor, a generously-sized open-plan kitchen/dining area features patio doors which open out to the garden, creating impressive levels of light and space. The ground floor also comprises a good-sized living room and cloakroom. On the first floor there are two generous bedrooms both with built-in wardrobes. Master bedroom also has a large en-suite.

FIRST FLOOR

Master Bedroom	3.75m x 3.22m	12'4" x 10'7"
En-suite	1.67m x 1.80m	5'6" x 5'11"
Bedroom 2	3.08m x 2.57m	10'1" x 8'5"
Bathroom	1.96m x 2.22m	6'5" x 7'3"

GROUND FLOOR

Living Room	3.77m x 3.34m	12'2" x 10'11"
Kitchen/Dining	4.89m x 2.77m	16'1" x 9'1"
WC	1.77m x 1.22m	5'10" x 4'0"
Total area	76.0m²	818 sq ft

All dimensions are approximate and are taken to the widest point.

t: 01330 824900 e: sales@bancon.co.uk @banconhomes www.banconhomes.com

Whilst these particulars are prepared with all due care for the convenience of intending purchasers, the information is intended as a preliminary guide only. The right is expressly reserved by the Company to amend or vary same and therefore nothing contained herein shall constitute or form any part of any contract.

It is company policy to ensure that no misleading information is provided to prospective purchasers – complying with the terms and conditions of the Property Misdescriptions Act which came into force in April 1993. All interested parties should consult the Sales Consultant for the most up-to-date information.

Any photographs/computer generated images within this leaflet are for illustrative purposes only and to show a typical Bancon home, but are not necessarily specific to this development.

Bancon Homes

